

PLANK LIVING



EQ3

PLANK – LIVING

DESCRIPTION

The Plank collection, designed for EQ3 by Tom Chung, marries closed storage with multi-palette customization, making this series of walnut or oak veneer pieces both unique and perfectly suited to each individual's space. Choose fabric or wood-slat panels to introduce colour and texture into the home through easily applied doors. The pieces in the Plank collection couple function and personalization in an aesthetic that becomes your own.

FAQ

- Fabric Doors are custom made and subject to lead times - Custom upholstery is non-refundable and cannot be changed, returned or cancelled. Custom upholstery requires approximately 6-10 weeks for delivery.

FINISH OPTIONS

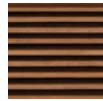


OAK



WALNUT

DOOR OPTIONS



SLATTED



FABRIC

SHIPPING

All EQ3 custom upholstery will be delivered by freight using EQ3's logistical partner. Delivery timelines will vary depending on your location, however, please allow a minimum of 6-10 weeks for EQ3 custom upholstery delivery. Please note that custom upholstery and special orders cannot be amended, refunded or cancelled, as they are made-to-order for you.

For non-upholstered items: Delivery timelines will vary depending on your location, however, please allow a minimum of 2-4 weeks for in-stock large furniture items delivery.

Our delivery partner will contact you to set up an appointment (date and time) to deliver your order.

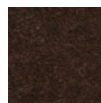
WARRANTY

One (1) year warranty against material and workmanship's defects. View complete EQ3 Casegoods Warranty.

FABRIC DOOR OPTIONS (LANA)



BLACK



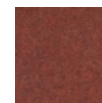
BROWN



DARK GREY



YELLOW



BURNT
ORANGE



RUST RED



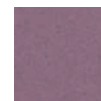
LIGHT GREY



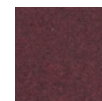
TAUPE



DARKE
TAUPE



LIGHT
PURPLE



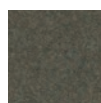
DARK
PURPLE



SOFT BLUE



SAND



OLIVE
GREEN



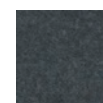
SOFT
GREEN



BRIGHT
BLUE



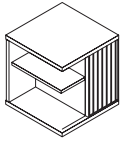
DEEP BLUE



DARK
TURQUOISE

PLANK – LIVING

SIDE TABLE



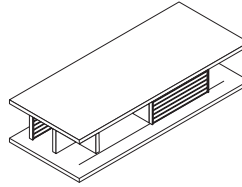
SLATTED

17" w × 17" d × 19.25" h
Walnut 3020-628, 633-13-A, B
Oak 3020-628, 633-16-A, B

UPHOLSTERED

17" w × 17" d × 19.25" h
Walnut 3020, 30177-628-13-A, PV
Oak 3020, 30176-628-16-A, PV

RECTANGULAR COFFEE TABLE



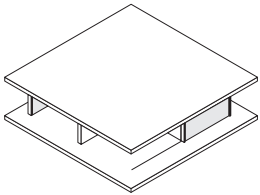
SLATTED

51" w × 21" d × 12" h
Walnut 3020-624, 629-13-A, B
Oak 3020-624, 629-16-A, B

UPHOLSTERED

51" w × 21" d × 12" h
Walnut 3020, 30177-624-13-A, PS
Oak 3020, 30176-624-16-A, PS

SQUARE COFFEE TABLE



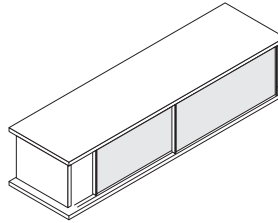
SLATTED

38" w × 38" d × 12" h
Walnut 3020-623, 629-13-A, B
Oak 3020-623, 629-16-A, B

UPHOLSTERED

38" w × 38" d × 12" h
Walnut 3020, 30177-623-13-A, PS
Oak 3020, 30176-623-16-A, PS

65" MEDIA UNIT



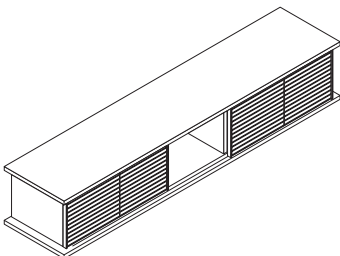
SLATTED

65" w × 18" d × 15.75" h
Walnut 3020-626, 630-13-A, B
Oak 3020-626, 630-16-A, B

UPHOLSTERED

65" w × 18" d × 15.75" h
Walnut 3020, 30177-626-13-A, PL
Oak 3020, 30176-626-16-A, PL

83" LOW MEDIA UNIT



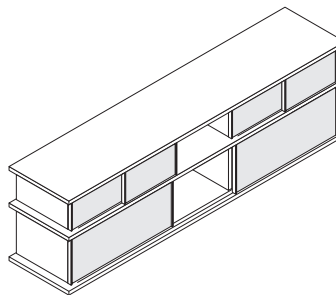
SLATTED

83" w × 18" d × 15.75" h
Walnut 3020-625, 630-13-A, B
Oak 3020-625, 630-16-A, B

UPHOLSTERED

83" w × 18" d × 15.75" h
Walnut 3020, 30177-625-13-A, PL
Oak 3020, 30176-625-16-A, PL

83" HIGH MEDIA UNIT*



SLATTED

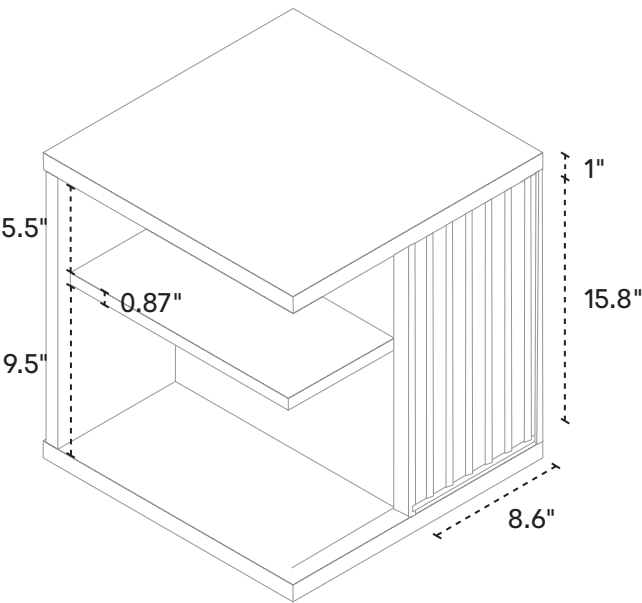
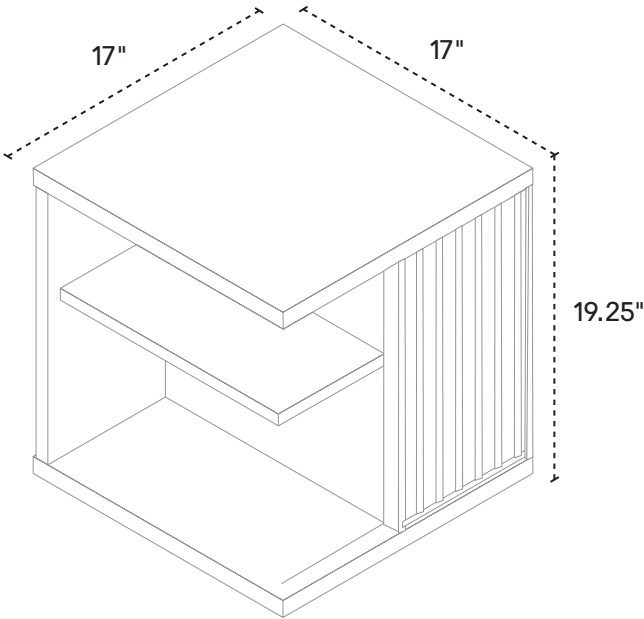
83" w × 18" d × 25.5" h
Walnut 3020-627, 629, 630-13-A, B
Oak 3020-627, 629, 630-16-A, B

UPHOLSTERED

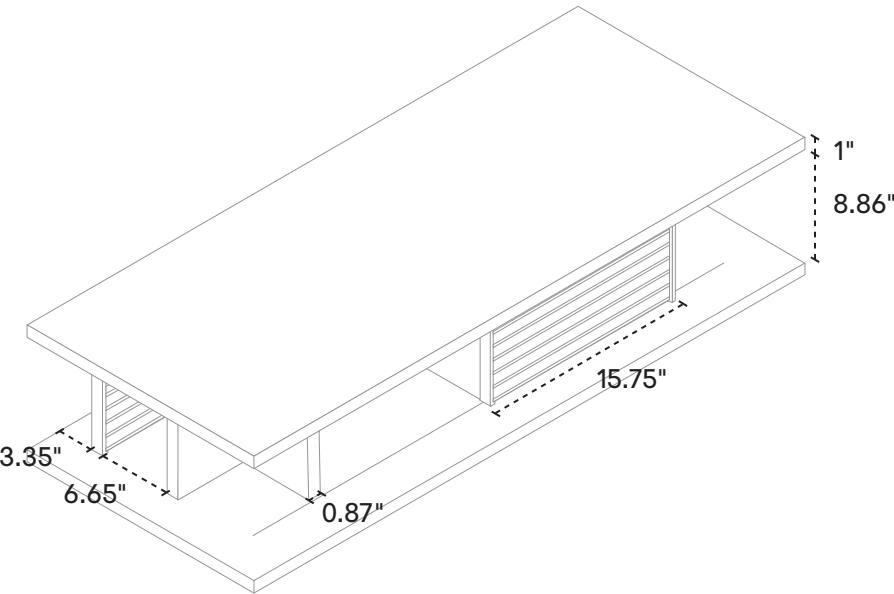
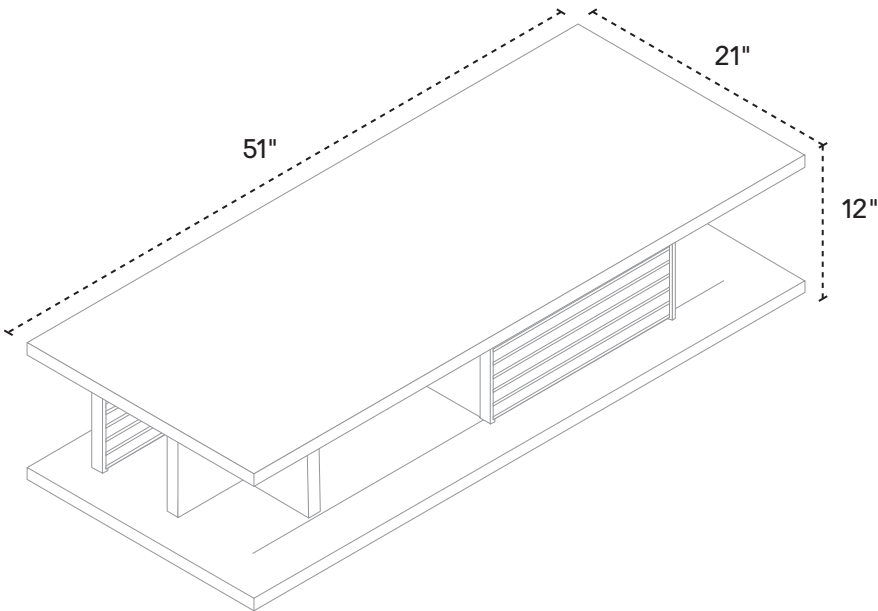
83" w × 18" d × 25.5" h
Walnut 3020, 30177-627-13-A, PL, PS
Oak 3020, 30176-627-16-A, PL, PS

*Plank High Media Unit uses two sets of 2 small doors and one set of 2 large doors. Mix and match slatted and upholstered doors as desired.

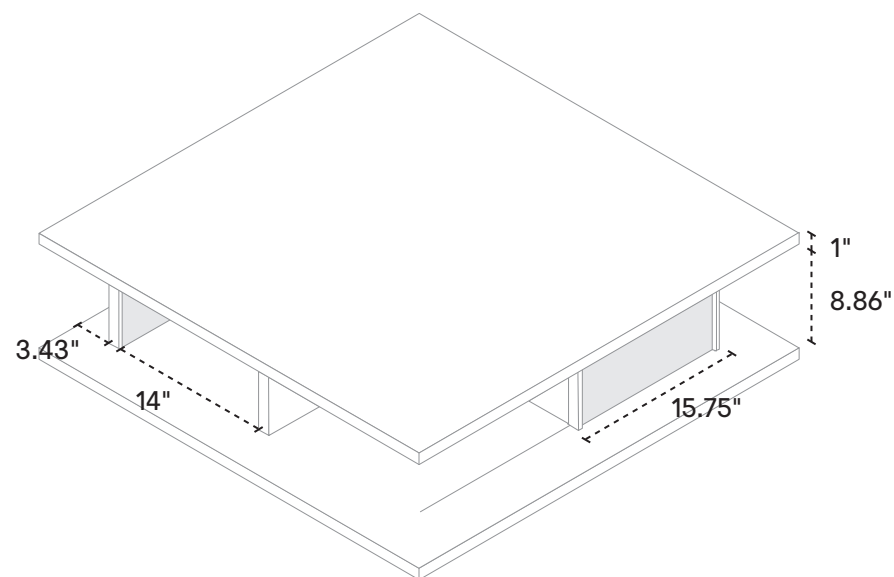
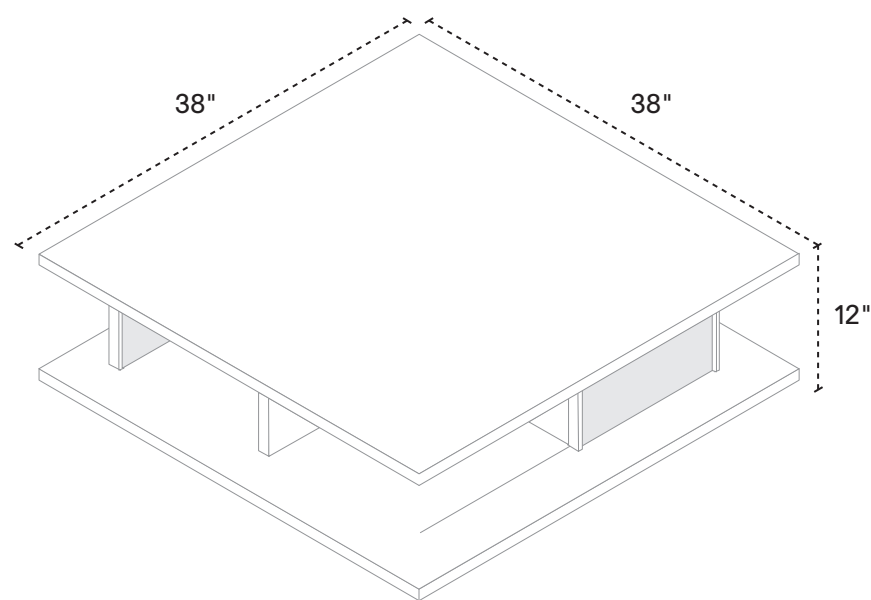
SIDE TABLE



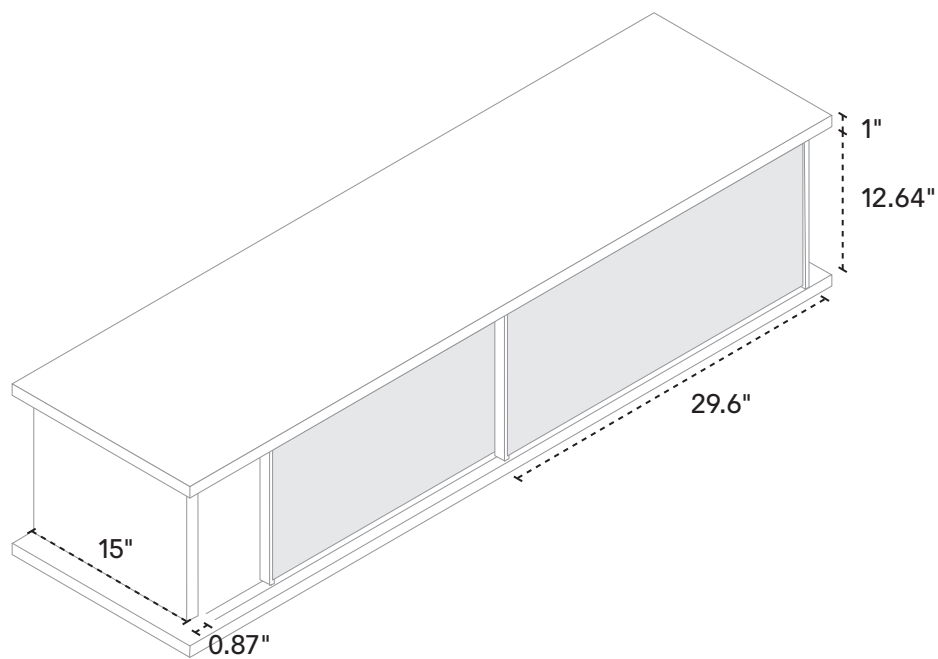
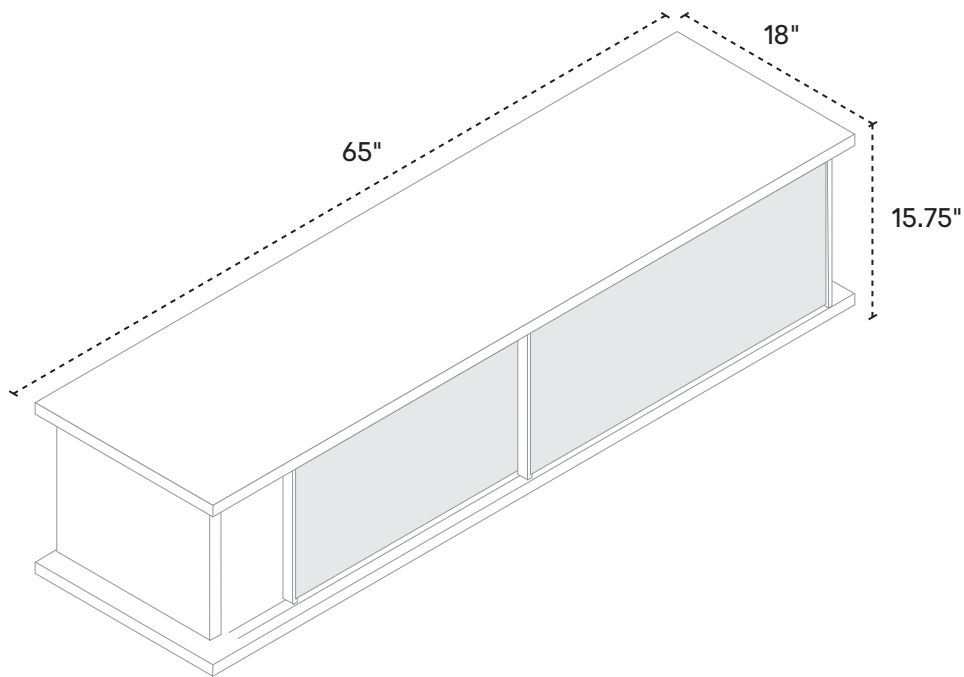
RECTANGULAR COFFEE TABLE



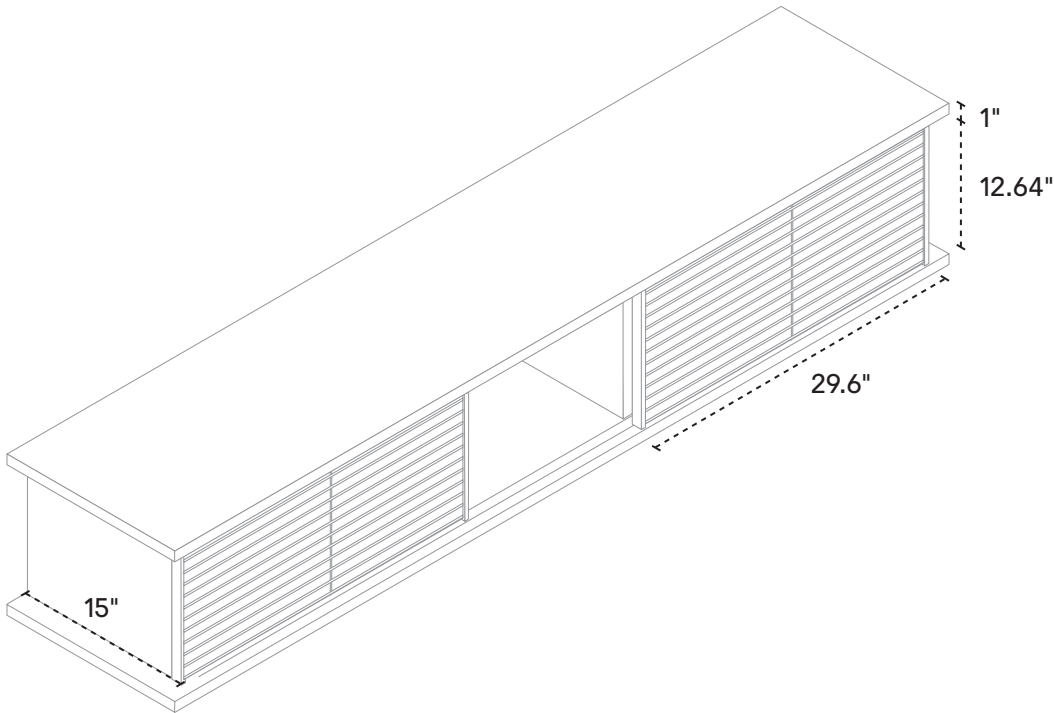
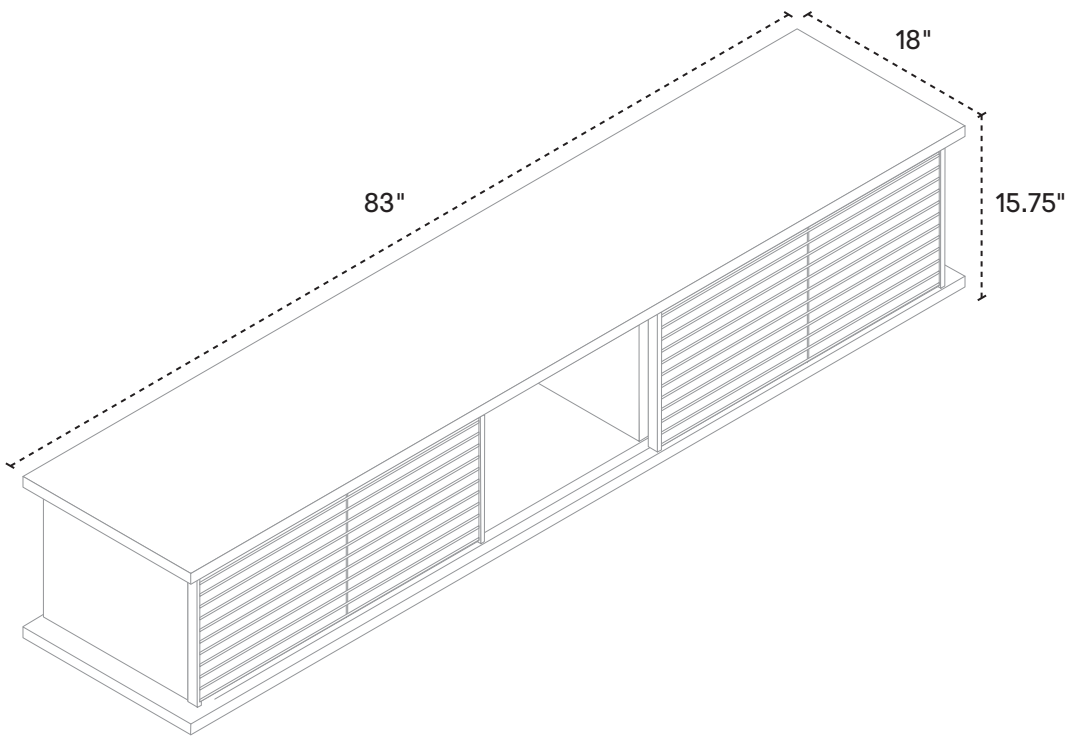
SQUARE COFFEE TABLE



65" MEDIA UNIT



83" LOW MEDIA UNIT



83" HIGH MEDIA UNIT

